

Community and Indigenous Engagement Plan

Project Name: Beaverton BESS

Project Proponent: wpd Renewable Energy & Incorporated

November 21, 2023

Table of Contents

Table of Contents	1
1. INTRODUCTION	2
2. PROJECT INFORMATION	3
3. COMPANY BACKGROUND	5
4. STAKEHOLDERS	6
5. PROPOSED CONSULTATION AND ENGAGEMENT ACTIVITIES.....	6
6. CONCLUSION	8

1. INTRODUCTION

wpd Renewable Energy 8 Incorporated has put together this Community and Indigenous Engagement Plan (“Engagement Plan”) in response to the Independent Electricity System Operator’s (the “IESO”) current Request for Proposals under the Long-Term 1 Procurement (“LT1”, or “LT1 RFP”). This Engagement Plan is being prepared in connection with the proposal for the 100MW Beaverton Battery Electric Storage System (BESS) Project to be located in the Township of Brock.

wpd Renewable Energy 8 Incorporated is a project corporation created for the Beaverton BESS by wpd Canada, a developer and operator of wind and solar projects across the country. wpd Canada is a subsidiary of wpd AG the Qualified Applicant for the LT1 RFP.

The Objectives of the Community and Indigenous Plan is to a) provide information about the project b) provide information about the company c) summarize the LT1 qualification and approval process, d) Identify the applicable stakeholders, e) summarize the public engagement, including consultation conducted to date and plans for future engagement and finally f) summarize stakeholder feedback. This Plan is iterative and will be continuously updated as it moves along the development and approvals process.

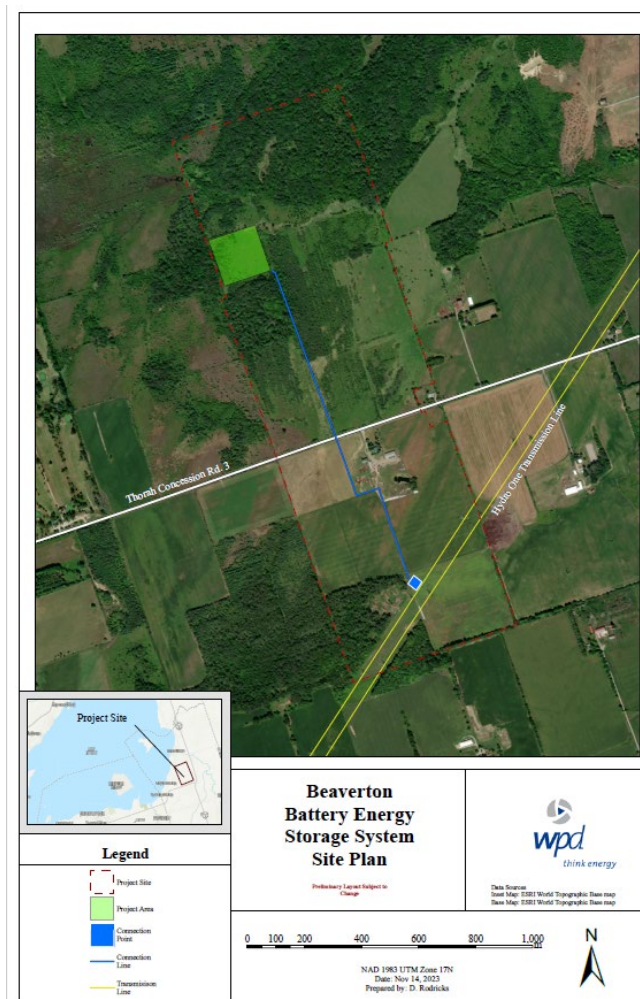
2. PROJECT INFORMATION

I. Project Description and Map

The proposed Beaverton BESS Project is located on private land accessed off Thorah Concession Road 3 west of Highway 12 within the Township of Brock. The currently proposed Project Nameplate capacity is 100MW. Project design is subject to change, but it is expected that the majority of the infrastructure will be located north of the Concession Road 3 and will connect to the transmission grid via a collector line travelling to the south to the Hydro One corridor.

The Project will consist of rows of battery storage cabinets, electrical infrastructure including transformers, underground/overground collector line and access roads along with related safety and communication equipment.

Figure 1: Site Plan



II. Applicant Information and RFP:

Qualification:

In 2022, wpd became a Qualified Applicant approved by the IESO for the Long-Term Renewable RFP. wpd's qualification was based on extensive project development experience and financial capacity.

Deliverability Test:

In the summer of 2023, wpd proposed a connection point and various sized BESS options for the Beaverton site as part of the IESO's Deliverability Test process. Deliverability was a process used to determine connection point availability on the given electrical circuit as well as the size in MW of the proposed facility.

A positive deliverability result confirmed space on the 230kV transmission line connected to the Hydro One Beaverton TS and the maximum size of wpd's proposed BESS project of 100MW. The rules of the submission process stipulate that the project cannot exceed this size.

LT1: Project Submission:

wpd intends to submit the Beaverton BESS project by the LT1 submission deadline, currently scheduled by the IESO for December 12, 2023. Decisions on the RFP submissions are not expected until Spring 2024.

Future Steps:

Should wpd be successful and be awarded a capacity contract from the IESO, the company would proceed to conduct Environmental Screening to determine if there are adverse environmental impacts on the surrounding area. wpd will also proceed to negotiating a connection agreement with Hydro One. Finally, if not obtained prior to or during the RFP submission process, wpd will work with the Municipality to ensure the Project obtains municipal approval.

Once these steps are completed the project will move forward to construction, testing and commissioning with an expected operation date by the end of 2027.

3. COMPANY BACKGROUND

Established in 1996, the wpd Group has become a world leader in renewable energy development. Headquartered in Bremen, Germany, wpd is active in 29 countries and has installed more than 5,740MW of capacity.

wpd Canada has been active in Canada since 2008 and is headquartered in Mississauga, Ontario. Our office is actively developing new wind, solar and energy storage facilities across the country.

The wpd Group has a strong history of community engagement and actively contributes to local cleanup initiatives and invests in global carbon offset programs related to the company's global development activities.



4. STAKEHOLDERS

wpd is committed to continuing public engagement through the entire Project process. Detailed below is what has been conducted to date and what is proposed going forward. The first step in our consultation process was to identify public, municipal, corporate, institutional and First Nation stakeholders.

This includes (but is not limited to):

- A. Landowners
 - a. Owners of all property parcels adjacent to the Project Site.
- B. Indigenous Stakeholders (not limited to)
 - a. Mississauga
 - b. Wendake-Nionwentsio
 - c. Anishinabewaki
 - d. Haudenosaunee
- C. Municipal Stakeholders
 - a. Township of Brock Mayor and Council
 - b. Township of Brock Chief Administrative Officer (CAO) and Clerk
 - c. Region of Durham Council
 - d. Region of Durham Clerk and Planning staff
- D. Government and Applicable Authorities including but not limited to;
 - a. Ontario Ministry of Environment, Conservation and Parks,
 - b. Ontario Ministry of Natural Resources and Forestry
 - c. Ontario Ministry of Energy
 - d. Ontario Ministry of Tourism, Culture and Sport
 - e. Hydro One
 - f. Local Distribution companies
 - g. Conservation Authorities

This list may grow as consultation on the Project continues and more interested parties are identified.

5. PROPOSED CONSULTATION AND ENGAGEMENT ACTIVITIES

Information on the Beaverton Project will be posted primarily through the Project website www.wpdprojects.ca/Beaverton. Stakeholders can also contact wpd via phone at 905-813-8400 x 228, email at info@wpdprojects.ca, or such other points of contact as may be designated and listed here as the Project proceeds

wpd will also be communicating with the public by hosting public meetings through each of the expected development phases of the project. The following is a timeline of completed and upcoming consultation benchmarks:

A. Notice of Proposal and Community Meeting Announcement:

wpd issued the first Notice regarding the Beaverton BESS in November, 2023 . Stakeholders adjacent to the property were sent a Project notice along with the announcement of the first public consultation meeting. In addition, a Notice was sent to the Clerk's Office in the Township of Brock and in the Region of Durham along with an introduction letter. Notices have also been sent to Georgina Island First Nation.

B. Meetings:

- a. Public Meetings:** The first meeting is scheduled for November 21st, 2023, from 7:00pm to 8:30pm at the Foster Hewitt Memorial Centre. The intention of the meeting is to introduce preliminary site plans and discuss the approval process.
- b. Municipal Meetings:** wpd intends to consult directly with Municipal officials in the Fall or early winter of 2023.
 - i. wpd has already engaged in an online conference call with Region of Durham Planning Staff
 - ii. wpd intends to reach out to Fire officials to discuss the Project in the near future.
- c. Consultation Minutes and Consultation Report**
 - i. Minutes and notes from the public meetings will be posted on the Project website. This Report will also be made available and will be updated as the Project progresses through its milestones. Information gained through the community meeting and through other correspondence will be included in the consultation report. However, no personal identification will be included in the report.

C. Future Consultation

- a. Municipal Support** wpd will continue to work with the Municipality towards obtaining a support resolution, and as part of the project permitting requirements.
- b. Project Updates:** wpd will continue to post updates about the project on our website. Should there be a material change to the Project, such as a successful contract award from the IESO, wpd will make plans to host additional public meetings. The website will also be continuously updated with related documents including:
 - i. Updated version of this Consultation Report
 - ii. Announcements concerning Environmental Screening exercises
 - iii. Site Reports
 - iv. Notices of public meetings
 - v. Site design changes

6. CONCLUSION

wpd commits to showing respect for the engagement process through all phases of the project. We understand the effectiveness of working together with local stakeholders to ensure a good long-term relationship with the Beaverton community.

wpd wants to be responsive to any questions or concerns that the project may raise and would encourage members of the community to visit www.wpdprojects.ca/beaverton to learn more about the Project or email us at info@wpdprojects.ca with any questions you might have.